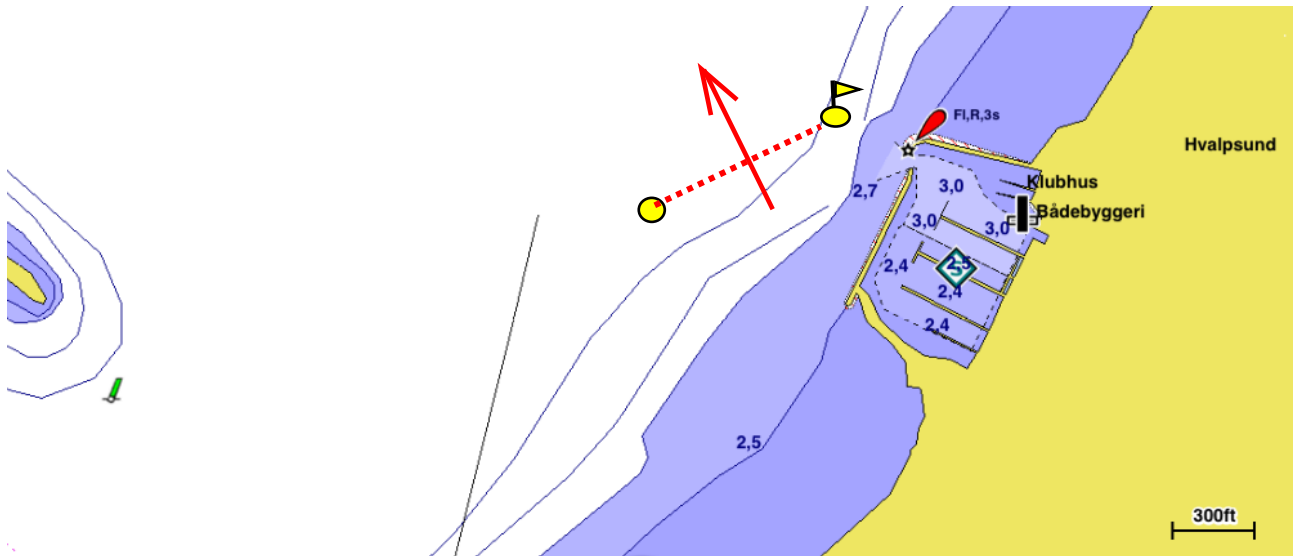
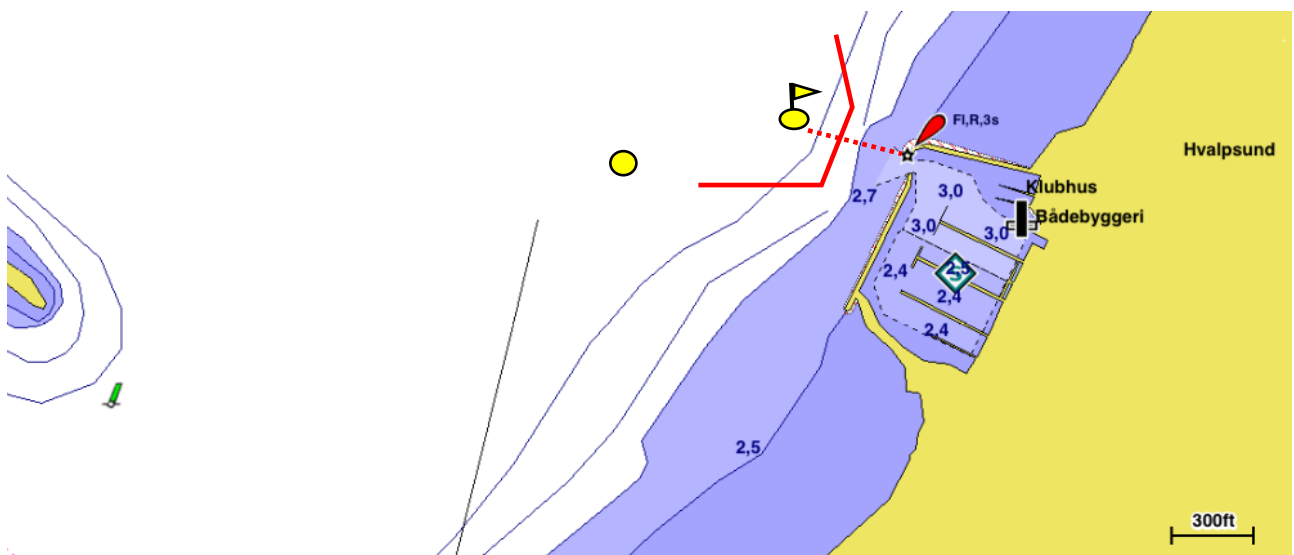


**Start imellem de 2 bøjer, hvis ikke andet er meddelt på skippermødet.**

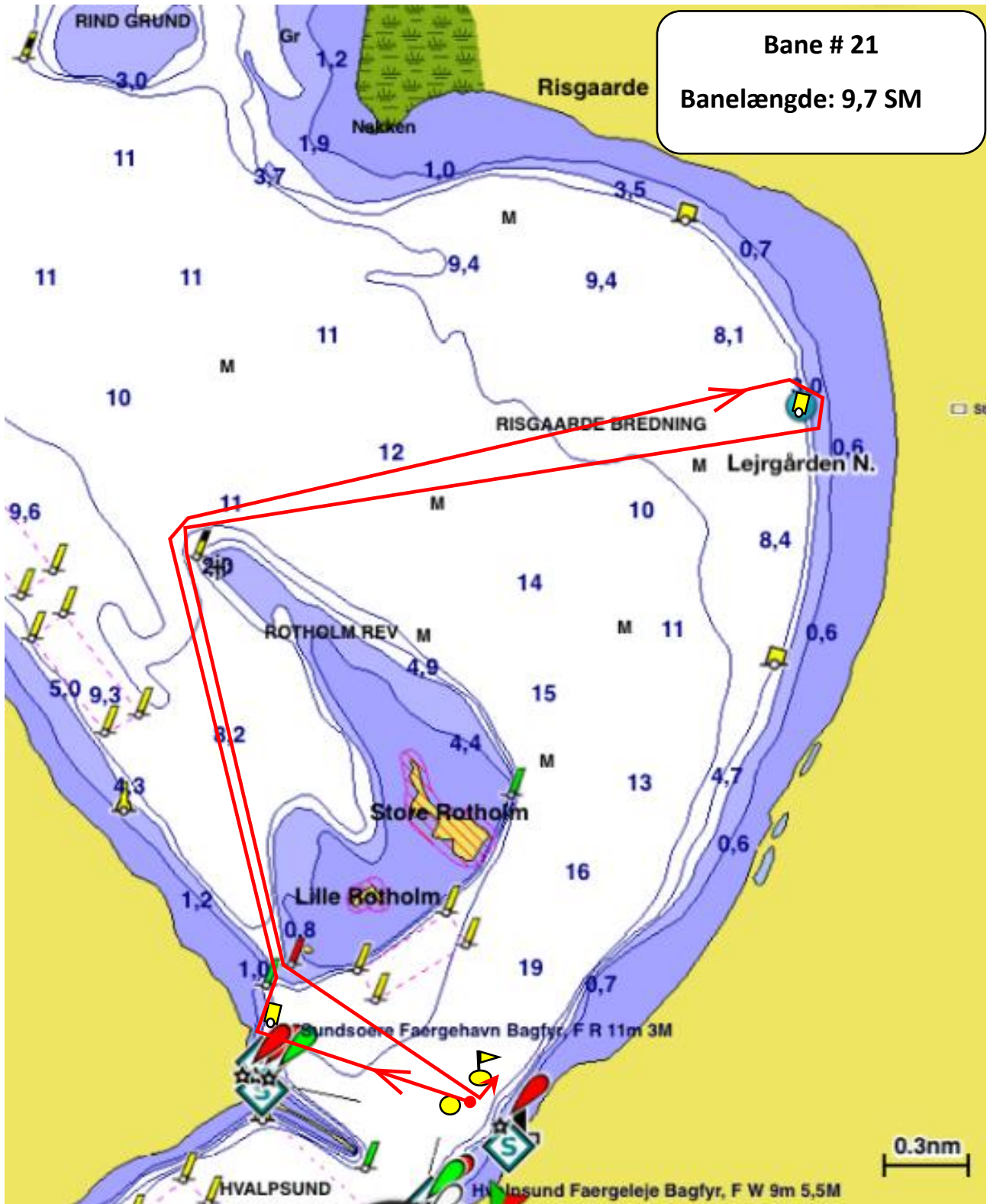


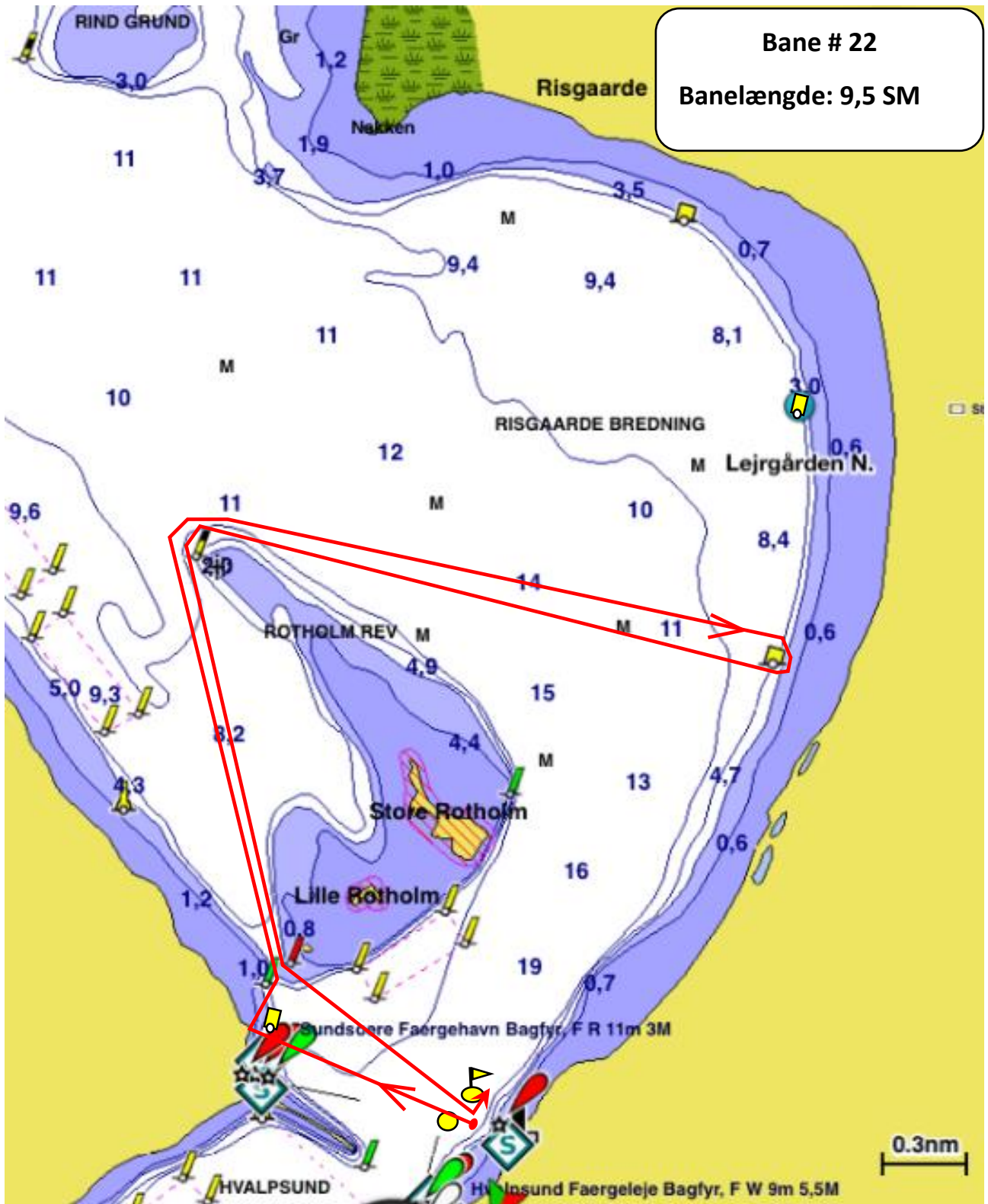
**Målgang imellem flagbøje og fyret på N. molen, iht. banekortet hvis ikke andet er meddelt på skippermødet.**

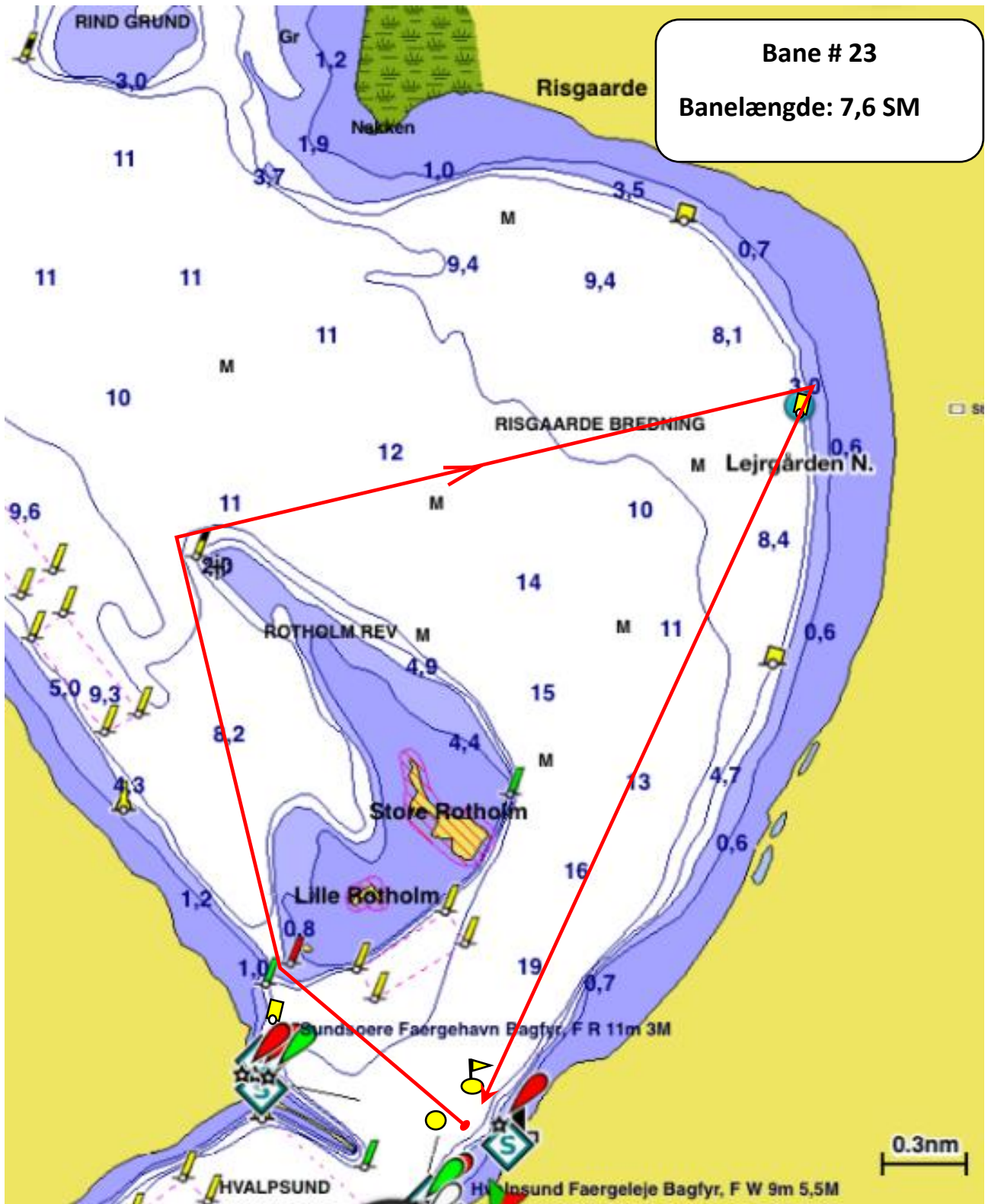


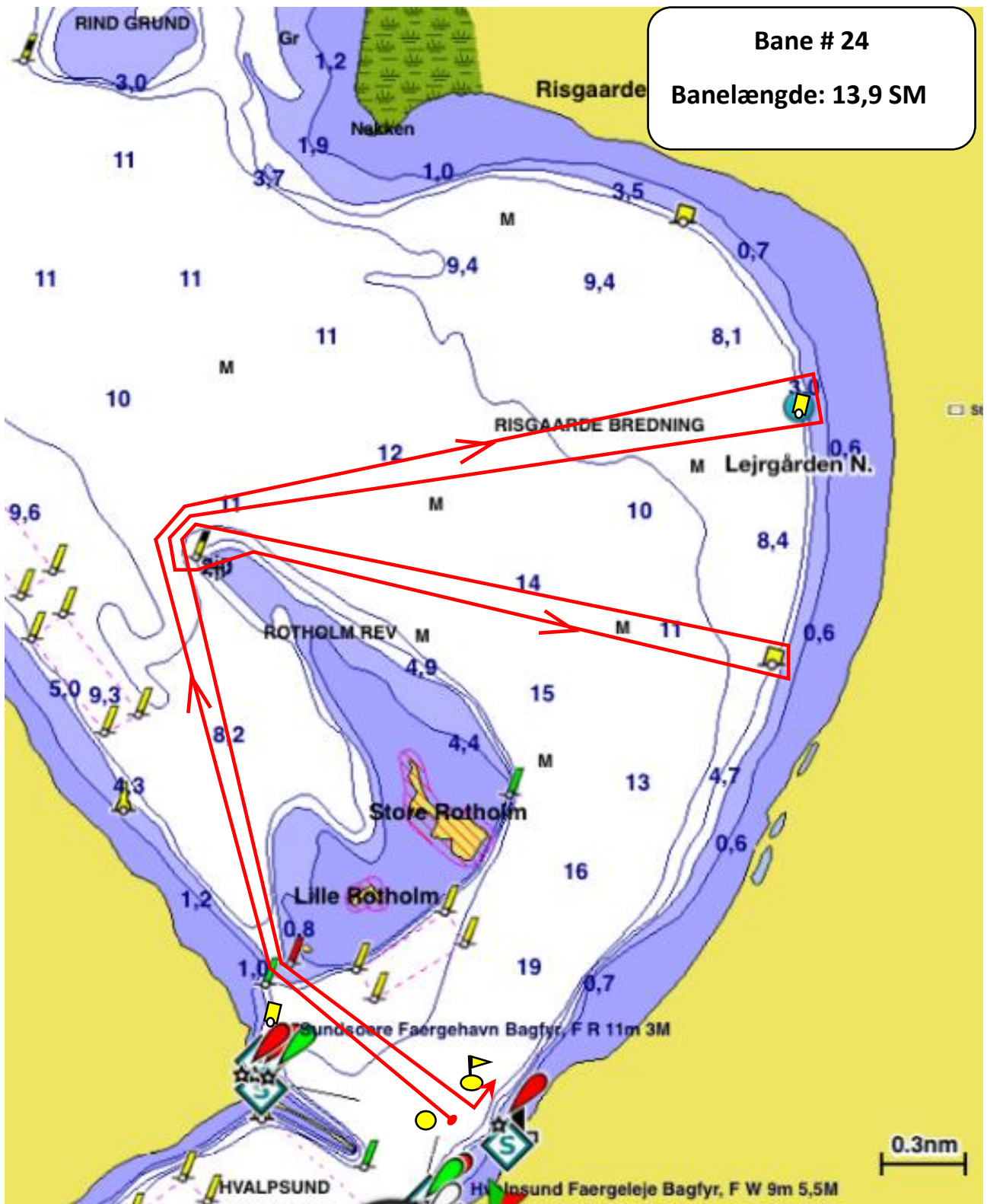
**Den valgte bane skal omsejles iht. banekortet. Hvis vindretningen passer bedre for "modsat vej rundt", vil dette blive oplyst på skippermøde inden sejladsen. Se også tavlen i klubhuset. Alle udlagte områder for linemuslinger skal respekteres iht. banekortet.**

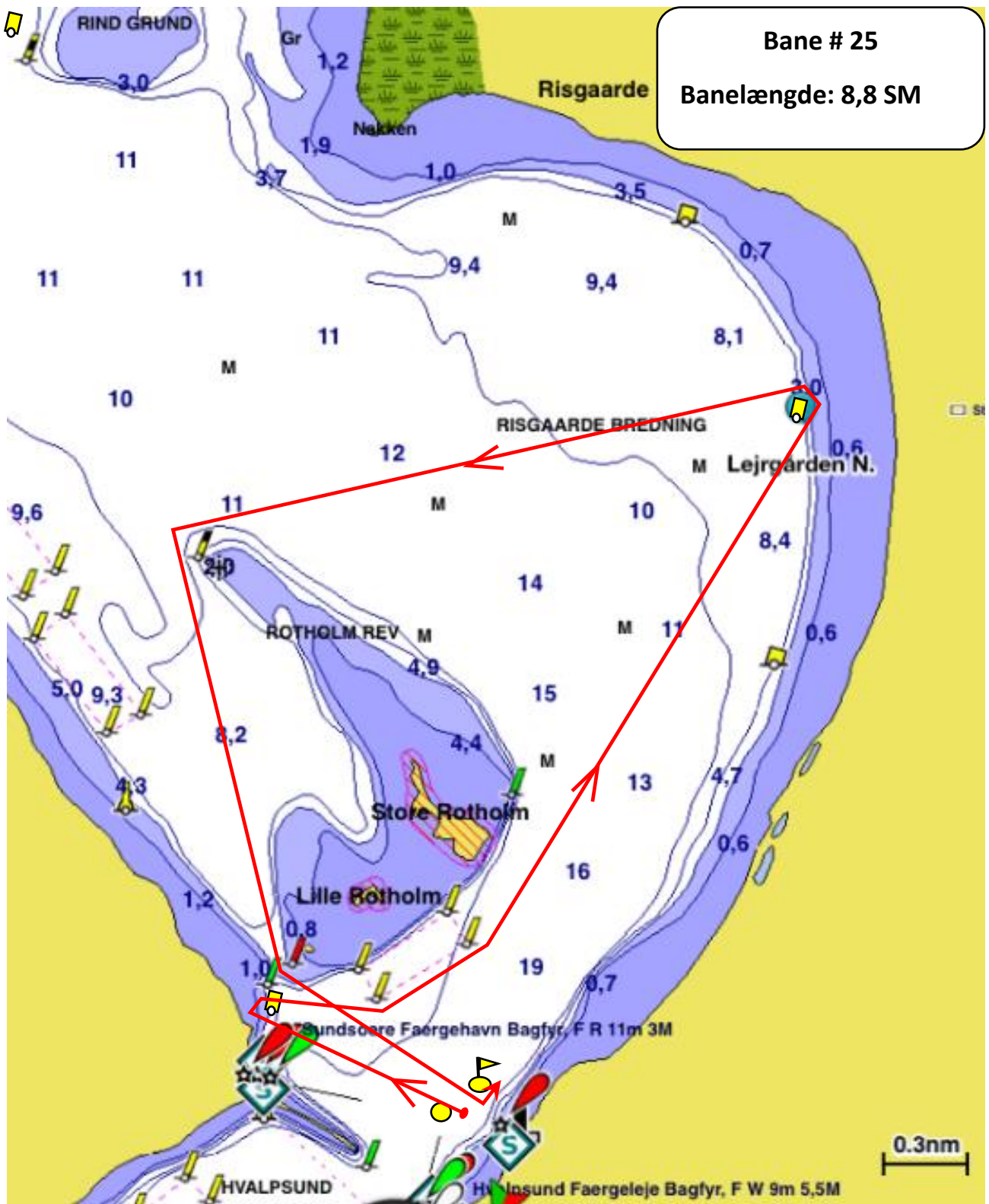




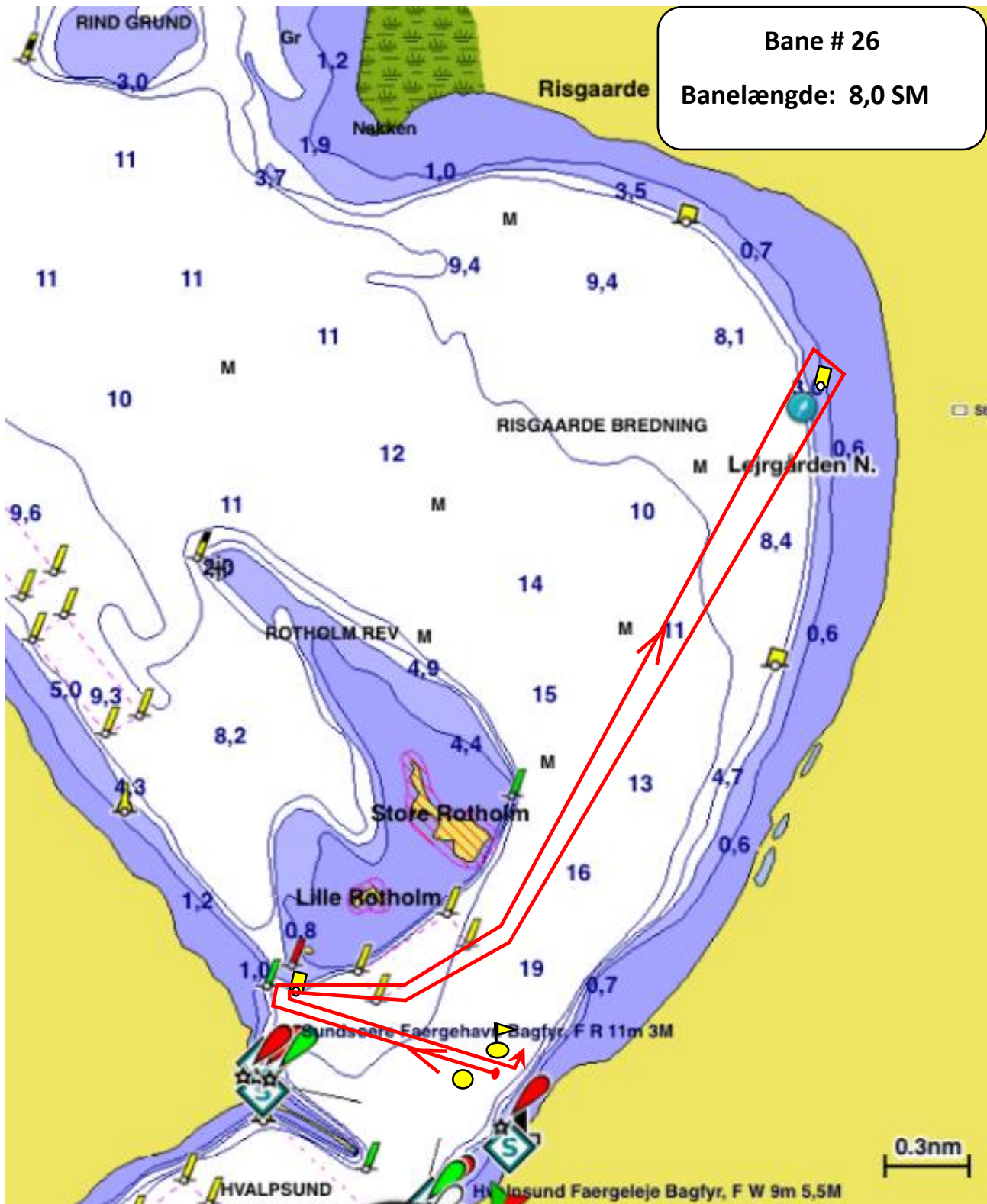




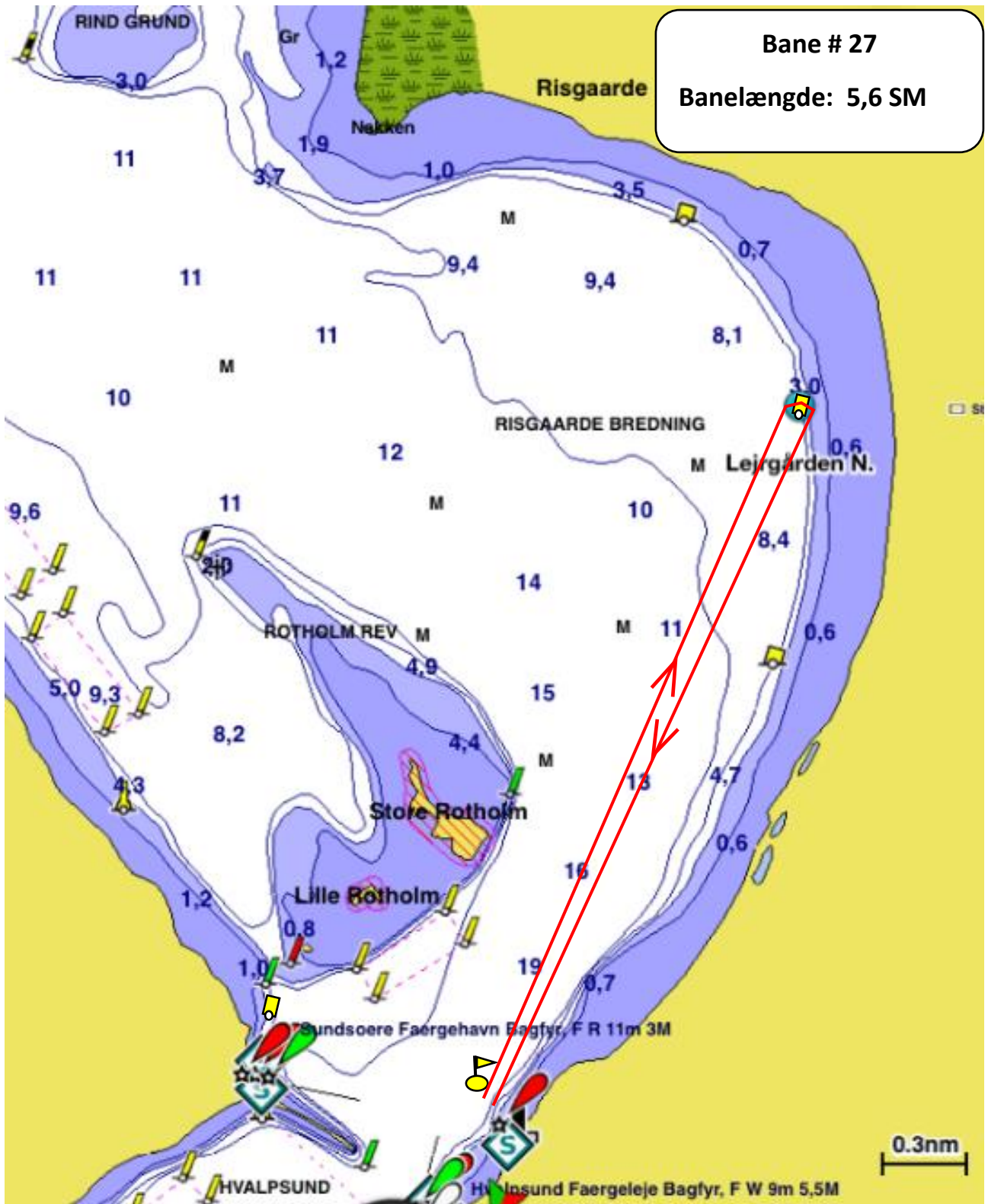


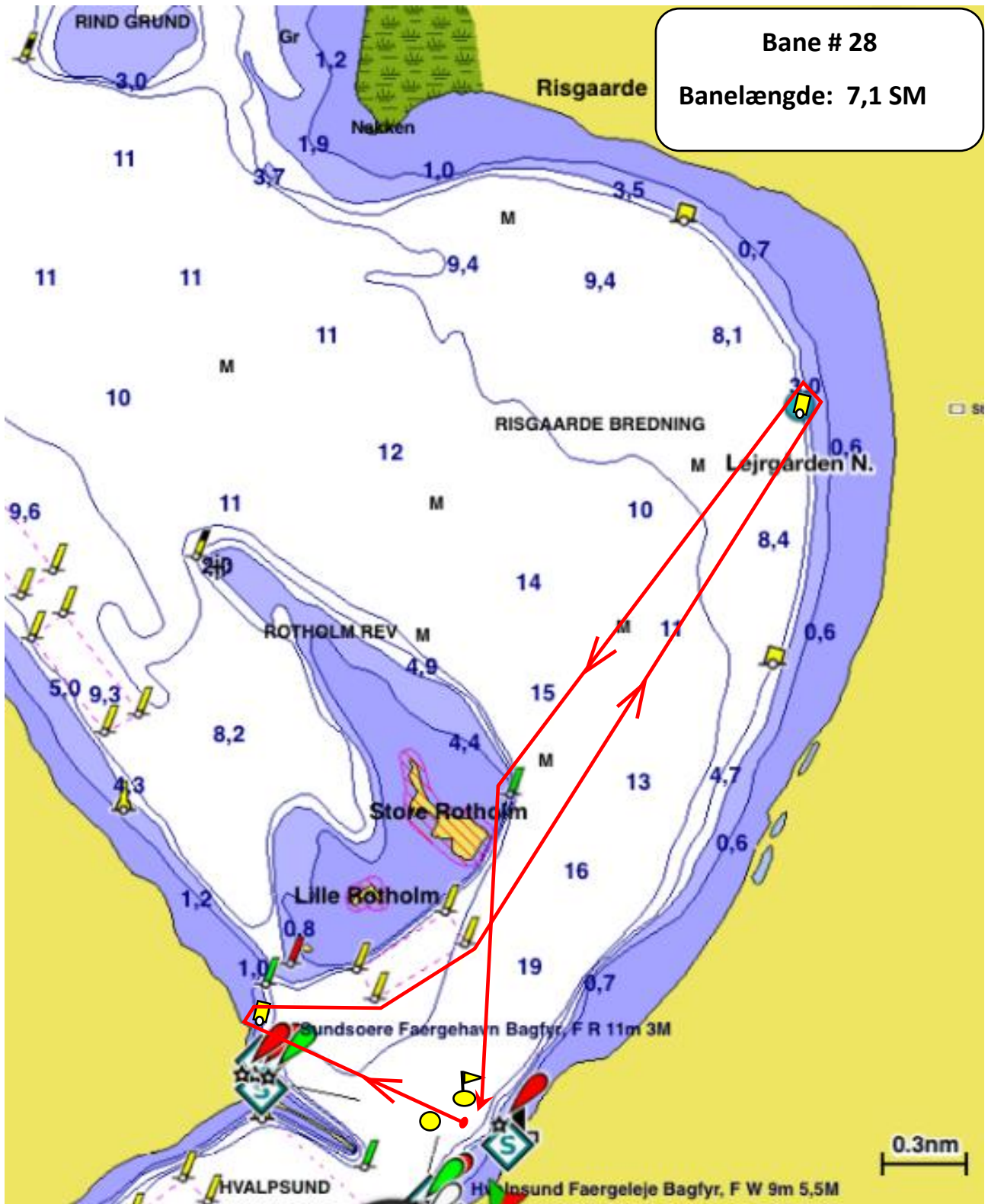


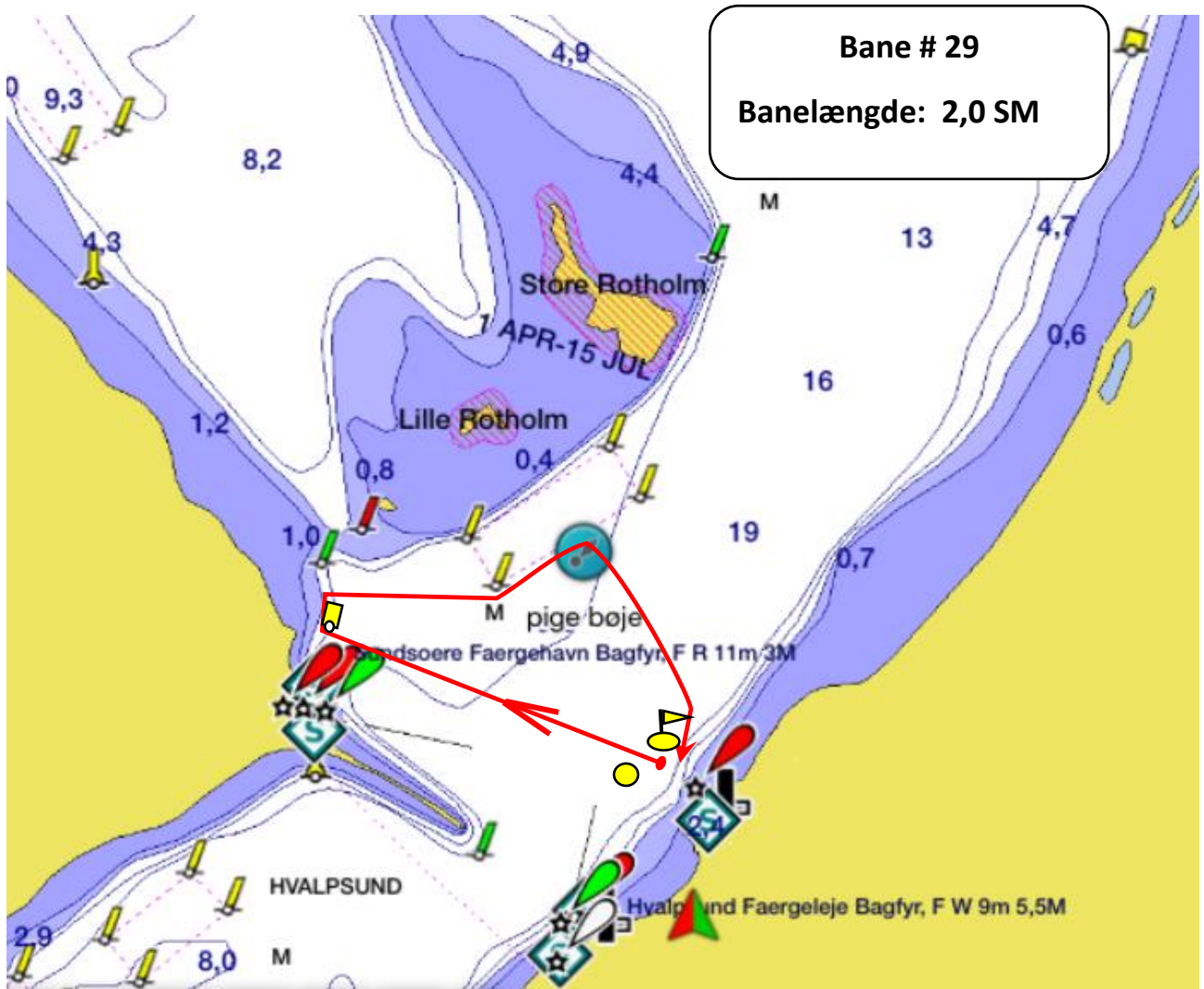
VV

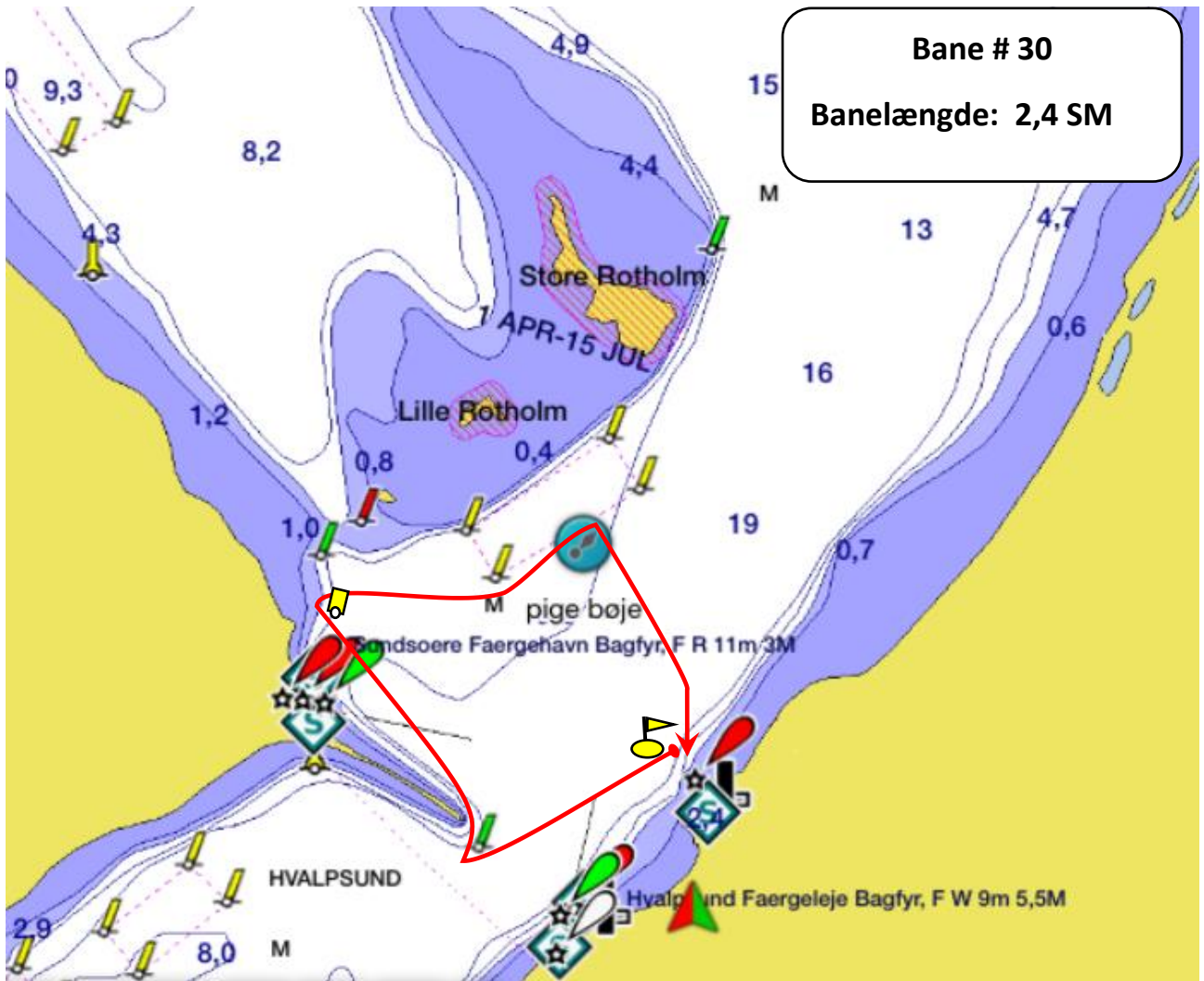


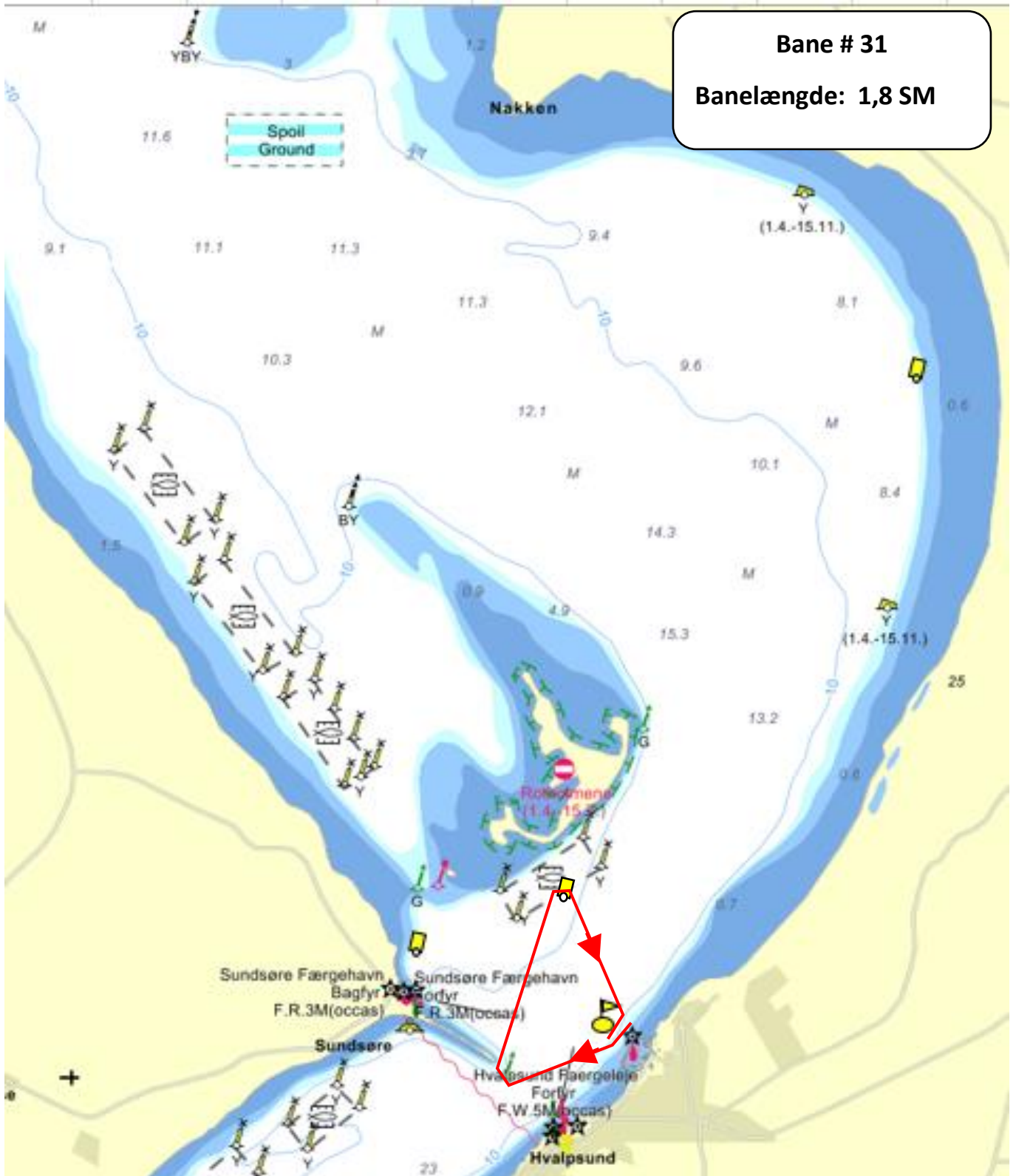






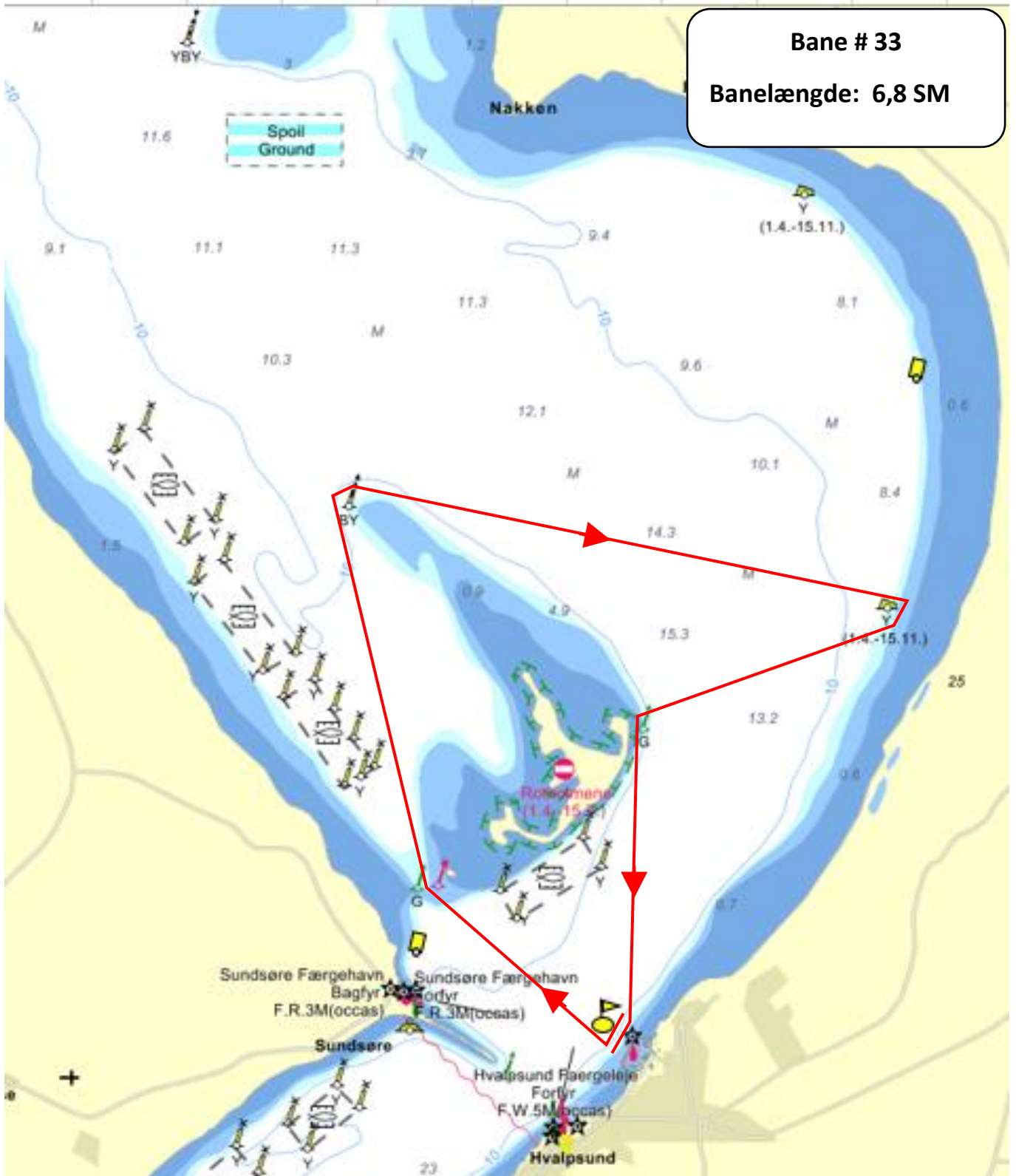






**Bane # 31**  
**Banelængde: 1,8 SM**





**Bane # 34**  
**Banelængde: 8,3 SM**

